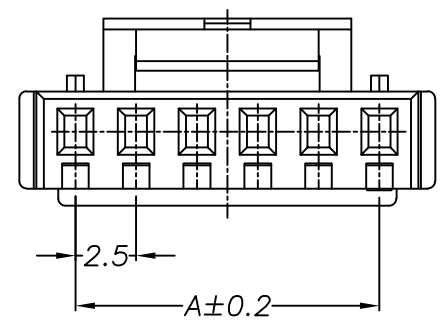
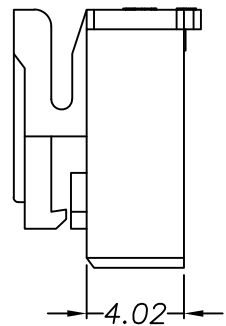
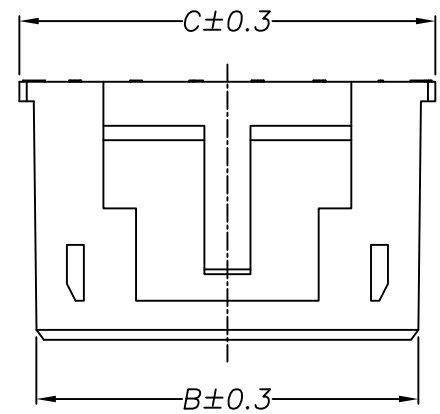
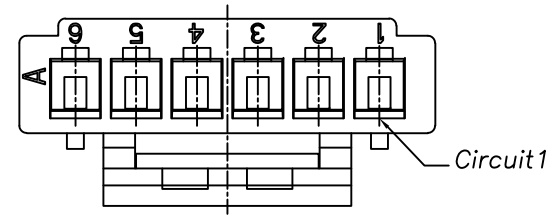
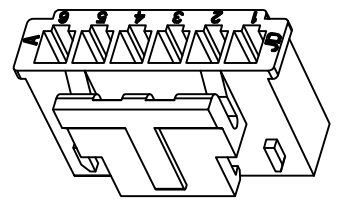


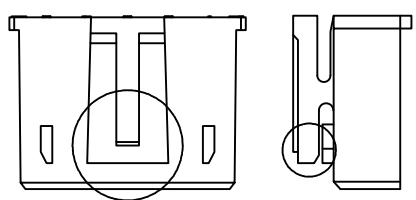
| REV. | ECN NO. OR DESCRIPTION | REVISED | DATE       |
|------|------------------------|---------|------------|
| A1   |                        |         | 2020-10-20 |

SPECIFICATIONS:

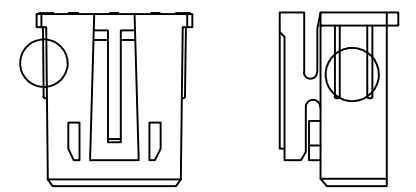
- °C ~ +85°C
- 4.Contact Resistance: 20mΩ Max.
- 5.Insulation Resistance: 1000MΩ Min.
- 6.Withstanding Voltage: 250V AC/minute
- 7.Suitable C2532 Series Terminal
- 8.Mates With C2531 Series Housing
- 9.Material:  
HSG: Nylon66 94V-0



| Circuits | Dimensions |       |       |
|----------|------------|-------|-------|
|          | A          | B     | C     |
| 2        | 2.50       | 5.70  | 7.10  |
| 3        | 5.00       | 8.20  | 9.60  |
| 4        | 7.50       | 10.70 | 12.10 |
| 5        | 10.00      | 13.20 | 14.60 |
| 6        | 12.50      | 15.70 | 17.10 |
| 7        | 15.00      | 18.20 | 19.60 |
| 8        | 17.50      | 20.70 | 22.10 |
| 9        | 20.00      | 23.20 | 24.60 |
| 10       | 22.50      | 25.70 | 27.10 |
| 11       | 25.00      | 28.20 | 29.60 |
| 12       | 27.50      | 30.70 | 32.10 |
| 13       | 30.00      | 33.20 | 34.60 |
| 14       | 32.50      | 35.70 | 37.10 |
| 15       | 35.00      | 38.20 | 39.60 |



2/3/4/5P卡扣不同



2/3P侧面不同

|              |   |         |       |       |  |                        |
|--------------|---|---------|-------|-------|--|------------------------|
| TOLERANCE    | DRAW  | BO      | SCALE | 1:5   | 耀聯電子科技有限公司<br><small>UNC Electronic &amp; Tech</small> |                        |
|              | DESIGN  | MA      | UNIT  | mm    |  |                        |
|              | X :±0.3   | CHECK   | LIAN  | SIZE  | A4   | PART NO. C2532H00-NP   |
|              | X.X :±0.25  | APPROVE | LIAN  | SHEET | 1of1   | DESCRIPTION SMH250-HSG |
| X.XX :±0.15  | VERSION   | J1      | PROJ. |       |  |                        |
| X.XXX :±0.10 | TEL:+86-769-87299998    WEB:http://www.uniconn.cn    MAIL:uniconn@163.com |         |       |       |  |                        |

