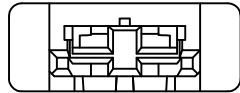
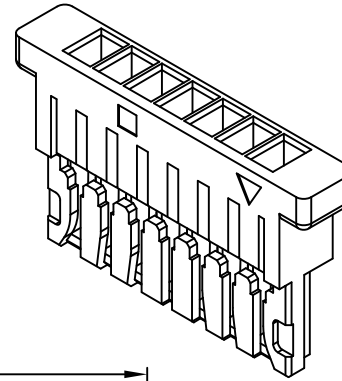
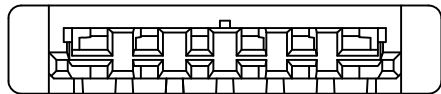


### SPECIFICATIONS

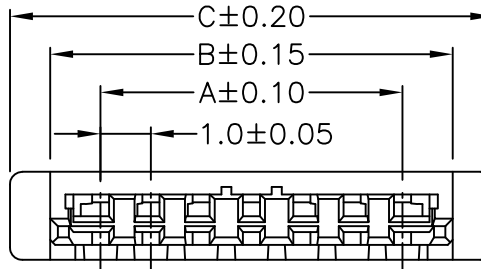
Current Rating: 1A AC,DC  
 Voltage Rating: 50V AC,DC  
 Temperature Range: -25°C ~ +85°C  
 Contact Resistance: 30mΩ Max.  
 Insulation Resistance: 100MΩ Min.  
 Withstanding Voltage: 500V AC/minute  
 Material: PA66,UL94V-0  
 Color: Natural(White)



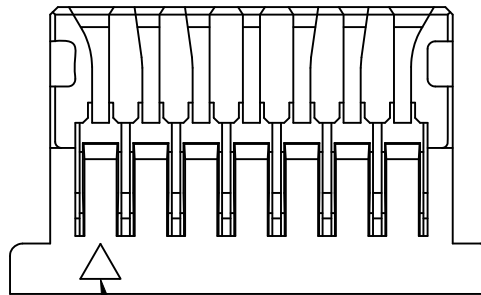
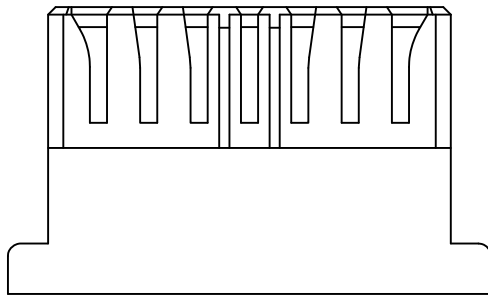
02P



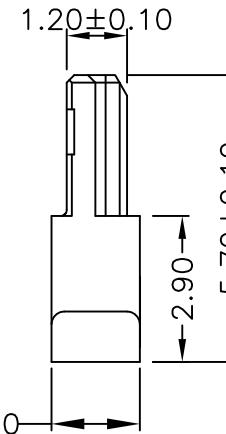
06.08.10.12.14.16.20.22.26.30P



03.05.07.09.11.13.15P



Circuit 1



| Circuits | Dimensions |       |       |
|----------|------------|-------|-------|
|          | A          | B     | C     |
| 02       | --         | 3.00  | 4.60  |
| 05       | 4.00       | 6.00  | 7.60  |
| 06       | 5.00       | 7.00  | 8.60  |
| 07       | 6.00       | 8.00  | 9.60  |
| 08       | 7.00       | 9.00  | 10.60 |
| 09       | 8.00       | 10.00 | 11.60 |
| 10       | 9.00       | 11.00 | 12.60 |
| 11       | 10.00      | 12.00 | 13.60 |
| 12       | 11.00      | 13.00 | 14.60 |
| 13       | 12.00      | 14.00 | 15.60 |
| 14       | 13.00      | 15.00 | 16.60 |
| 15       | 14.00      | 16.00 | 17.60 |
| 16       | 15.00      | 17.00 | 18.60 |
| 20       | 19.00      | 21.00 | 22.60 |
| 22       | 21.00      | 23.00 | 24.60 |
| 26       | 25.00      | 27.00 | 28.60 |
| 30       | 29.00      | 31.00 | 32.60 |

#### REVISION RECORD

| REV. | DATE | DESCRIPTION | CHANGE | APPROVE |
|------|------|-------------|--------|---------|
|      |      |             |        |         |
|      |      |             |        |         |
|      |      |             |        |         |

#### TOLERANCE

$.0 \pm 0.25$   
 $0.00 \pm 0.15$   
 $0.000 \pm 0.10$

#### DRAW

DESIGN  
 CHECK  
 APPROVE  
 VERSION

旭信

旭信

张奇春

张奇春

XP2

#### SCALE

1:1  
 UNIT  
 SIZE  
 SHEET  
 PROJ.

1:1

mm

A4

1/1

PROJ.



耀聯電子科技有限公司  
 UNC Electronic & Technology Co., Ltd

PART NO.

A1006H00-NP

DESCRITON

1.00mm PITCH

DRAWING NO.

HOUSING